

Joel Schildbach
Biology

Project Lab: Phage Hunting I, II
AS.020.135/AS.020.136

Project lab course vs. lab position

No prereqs (no lab experience assumed).

Access to research with ease of registration.

Less intimidating than approaching PI and asking for lab position.

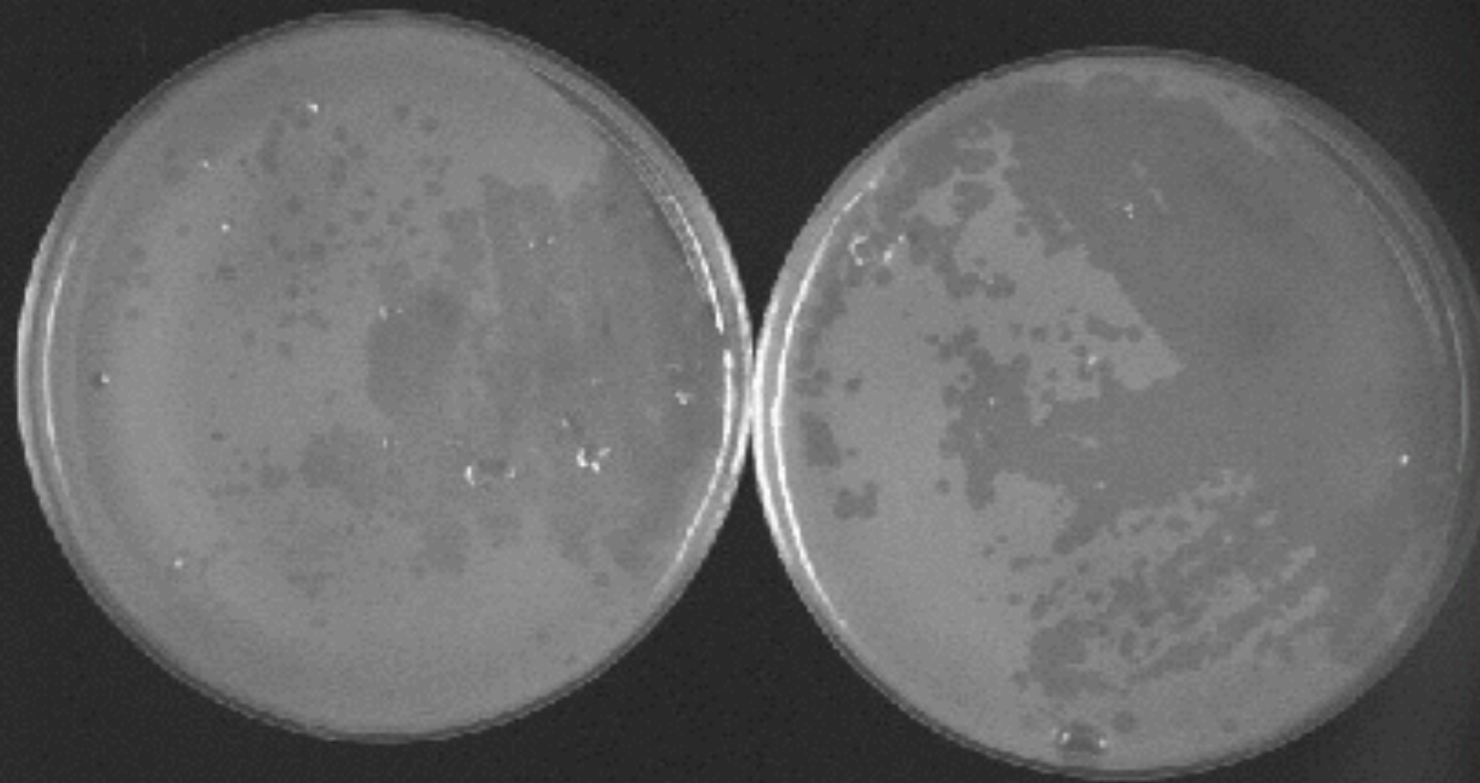


SEA-PHAGES

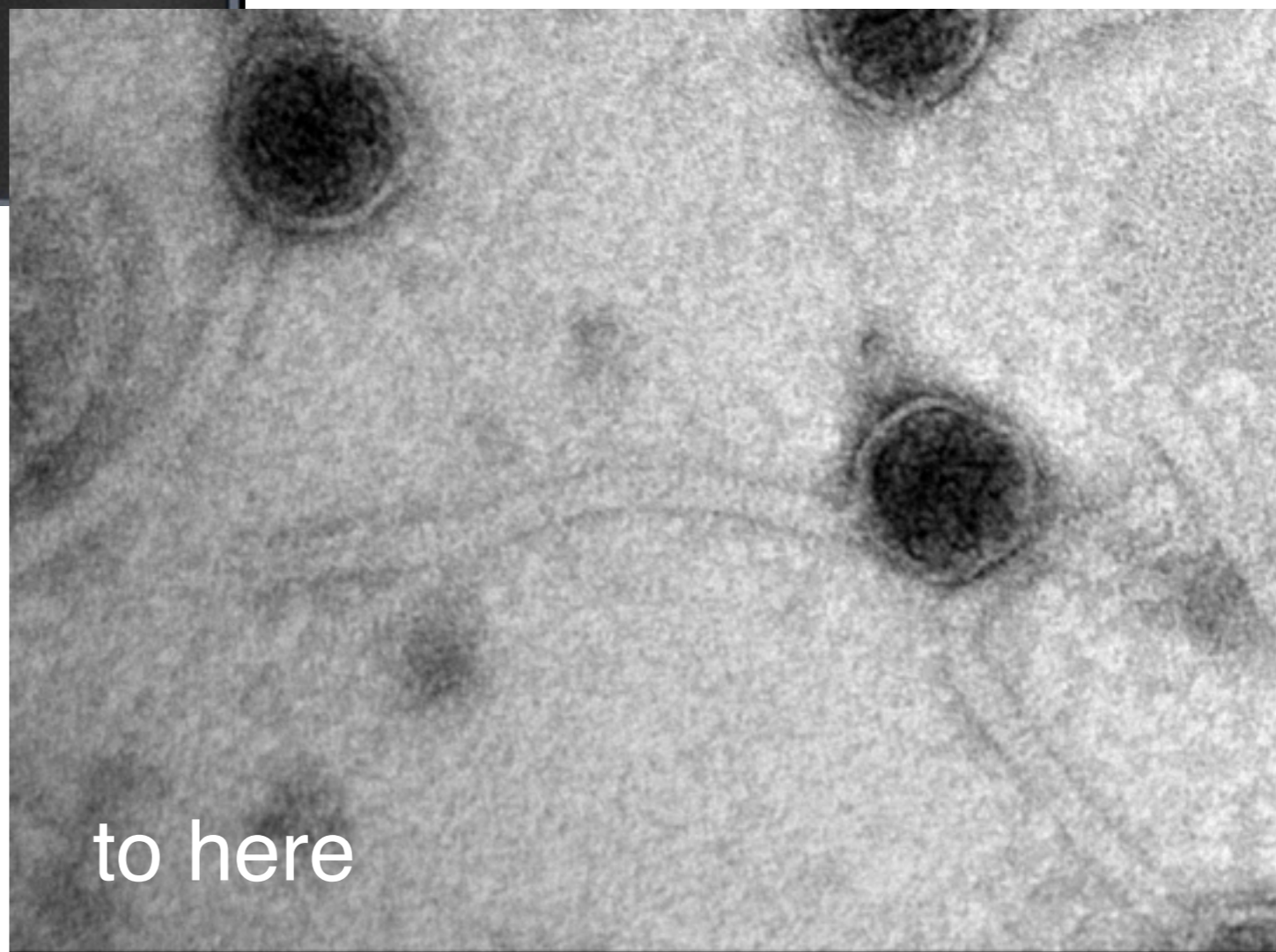
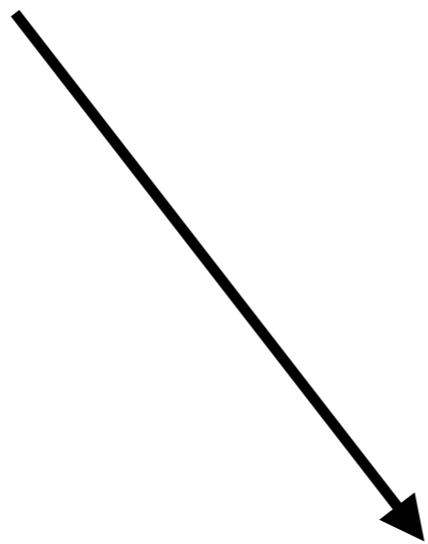
Science Education Alliance -
Phage Hunters Advancing Genomics and Evolutionary
Science

Howard Hughes Medical Institute program based on the
outreach program of HHMI Professor Graham Hatfull
(University of Pittsburgh)

Special recognition: Dr. Emily Fisher, Katie Cox
Also: Beverly Wendland, Vince Hilser, Katherine
Newman, GSI



From here



to here

1 um

Starts day 1!

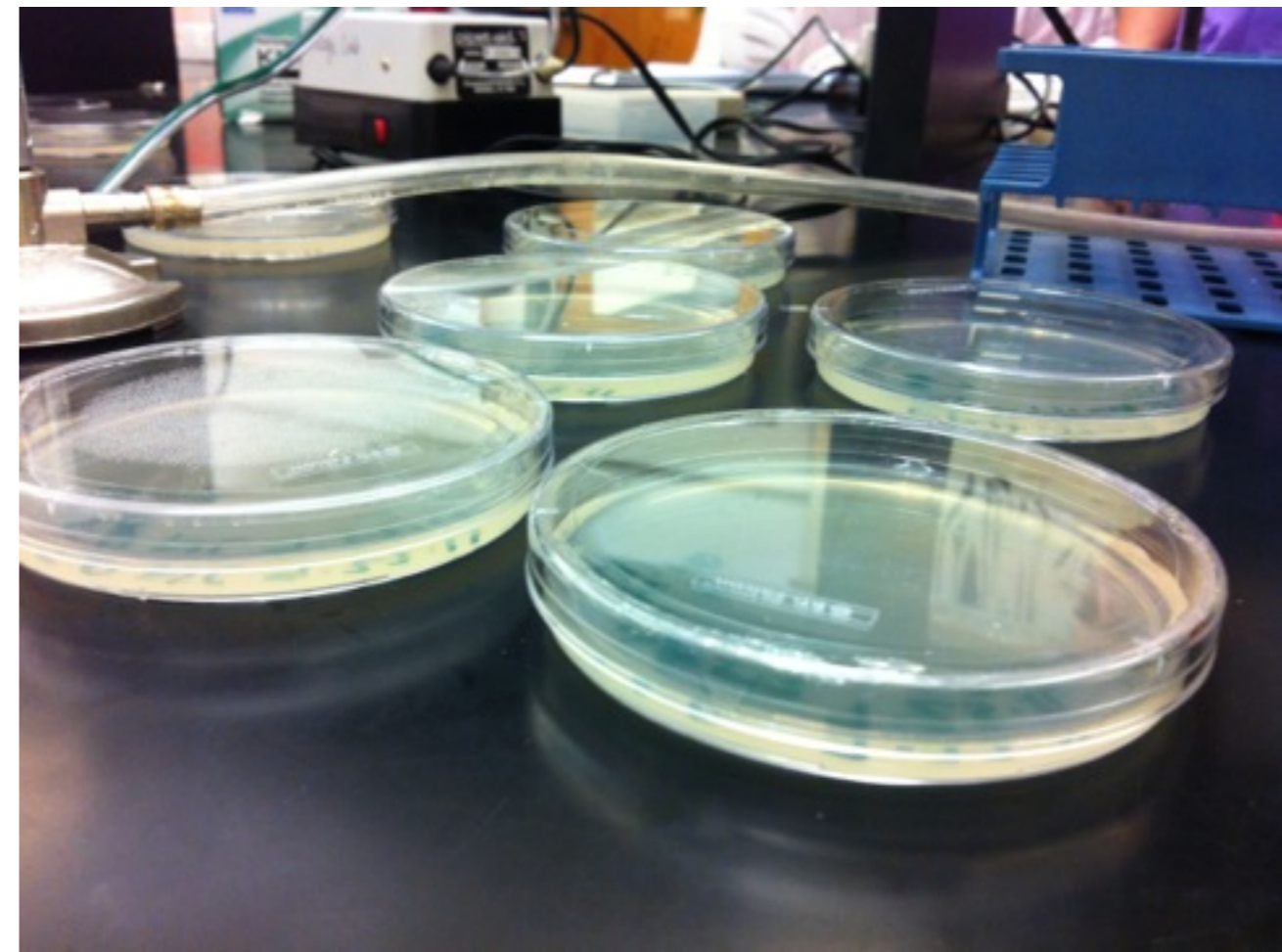
Dirt sample → plaques (evidence of phage)

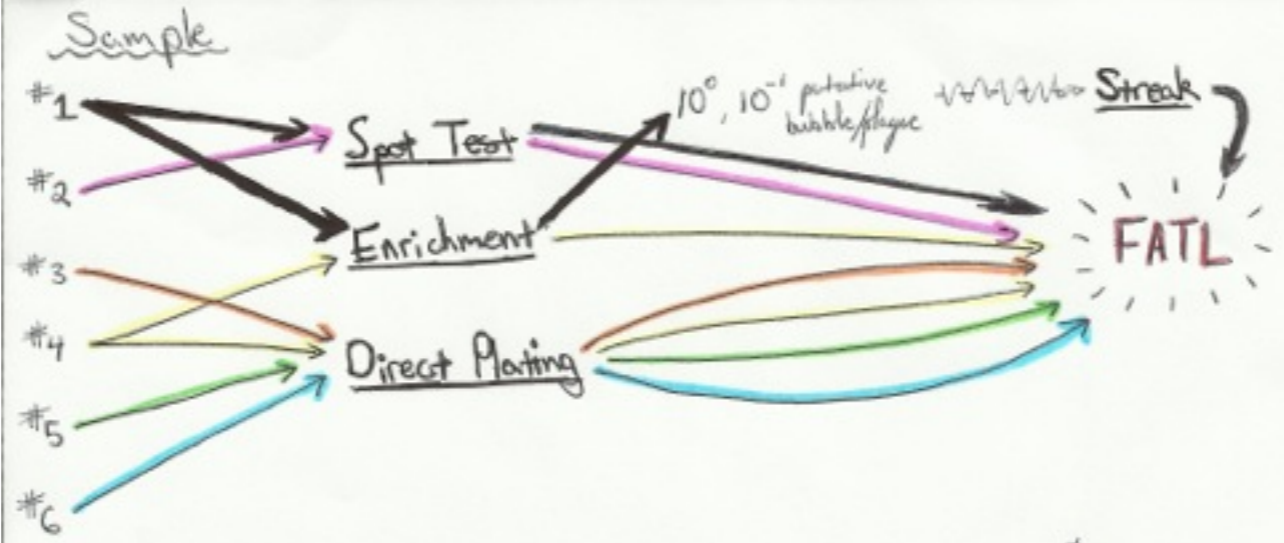
Plaques → streak → more plaques

Repeat

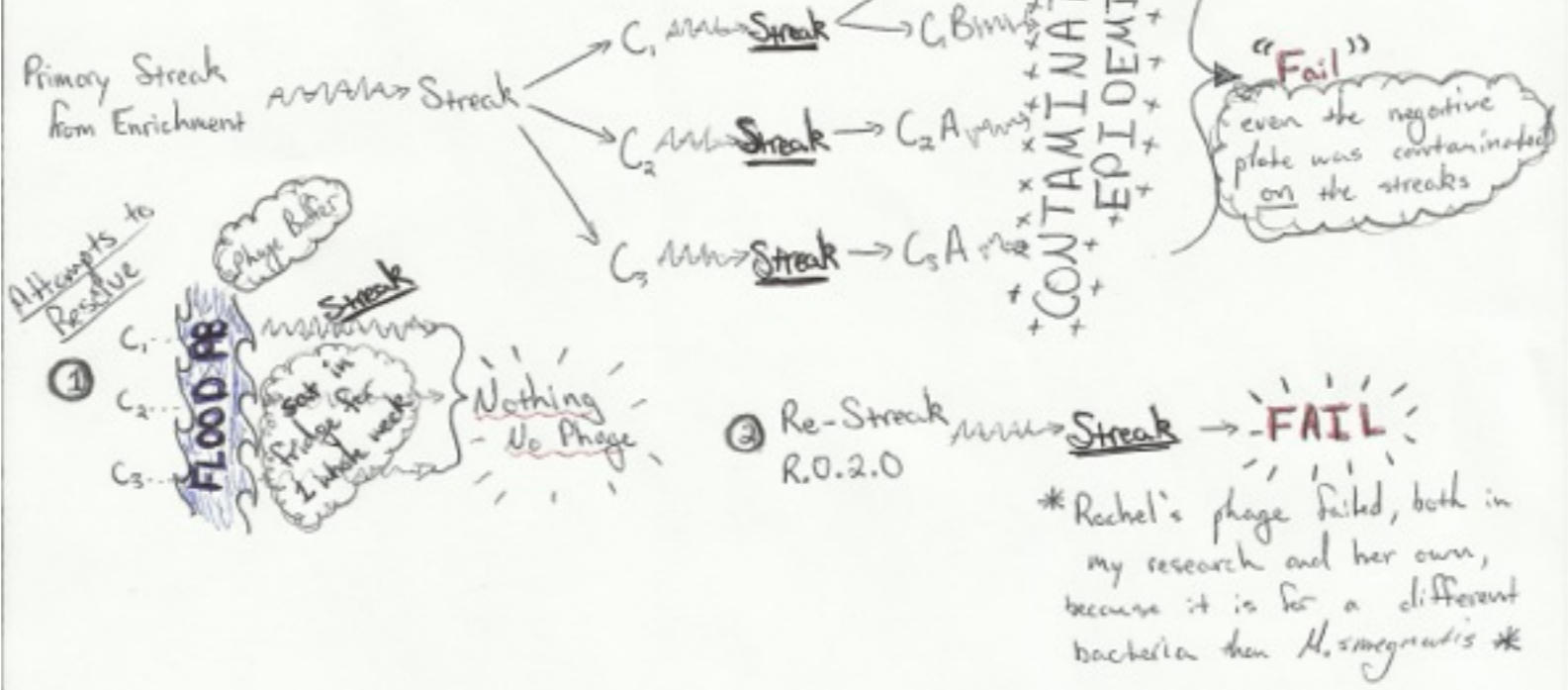
Lysate

Purify DNA, EM, archive





Rachel O'Boyle 2.0 Adaption [R.O.2.0]



Peter Kalugin Final Boss [B_F]



Keys

Repetition

Quick Success

Extended

Completion

Ownership

Significance

Community

Instructor

Cost/Staffing

